



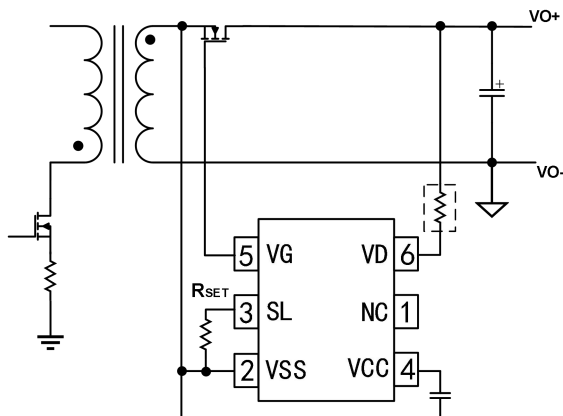
## Features

- ◆ Suitable for DCM,QR and CCM
- ◆ Supports both High-side and Low-side Rectification
- ◆ Wide Output Range down to 3V
- ◆ Supports USB PD + PPS
- ◆ No need for Auxiliary Winding or external power supply
- ◆ Ringing Detection Prevents False Turn-on during DCM and Quasi-Resonant Operations
- ◆ 10nS Fast Turn-off delay and 30nS Turn-on delay
- ◆ Accurate secondary side MOSFET Vds sensing
- ◆ Anti-interference with digital isolation
- ◆ SOT23-6 Package Available

## Applications

- USB PD Quick Chargers
- Power adapter
- Flyback Power Supplies with Very Low and/or Variable Output Voltage

## Typical Applications

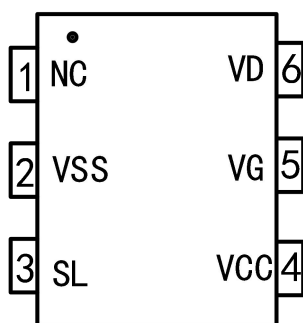


# G3608A

## Fast Turn-Off Intelligent Synchronous Rectifier

### 2. Products Information

#### 2.1 Pin configuration



SOT23-6 Package

Fig.1. G3608A Pin Configuration

Pin Num	Pin Name	I/O	Description
1	NC		Not connection.
2	VSS	P	Ground. VSS is also used as a MOSFET source sense reference for VD.
3	SL	P	Programming for turn-on signal slew rate detection. SL prevents the SR controller from turning on falsely by ringing below the turn-on threshold at VD in discontinuous conduction mode (DCM) and quasi-resonant mode. Any signal slower than the pre-set slew rate cannot turn on VG.
4	VCC	P	Power supply. Bypass a capacitor between VCC and VSS.
5	VG	O	Driver output for external N-channel MOSFET.
6	VD	I	MOSFET drain voltage sensing. VD is also used as the linear regulator input. A resistance of 100Ω can be placed between VD and Drain.